

Panamorph™

Professional Grade Anamorphic Lens Systems

FVX200 Anamorphic Lens System





IF YOUR IDEA OF GOING TO THE MOVIES IS ...

The adrenaline rush. The thrill of the chase. The intensity of drama unfolding. The escape that only your favorite movies can bring. Perfectly recreating everything you love about the cinematic widescreen experience. Now playing ... in the comfort of your own personal home cinema.





ANYTHING LESS IS JUST A BIG TV

Star Wars, Indiana Jones, Lord of the Rings, Avatar, The Dark Knight, Harry Potter, Pulp Fiction, Jaws, The Sound of Music. These and hundreds more of your favorite films were filmed in the true widescreen aspect ratio of 2.40:1. Perfect for the big screen, but more than what the largest 16:9 HD flat screens can handle without compressing the image between two black letterbox bars. To restore Hollywood blockbusters to their original cinematic glory, combine the FVX200 Panamorph lens system with a 16:9 HD projector and a 2.40:1 screen.





FLAT PANEL TVs **RAISED THE BAR**

Wall-mounted, flat panel HD TVs raised the bar for home theaters until finally a house without one is like a house without a kitchen. But there remains one major drawback between watching a movie at home versus the local cinema - the distracting black letterbox bars inherent with all 16:9 HD TVs. Besides sticky floors and expensive popcorn, we believe that a real home theater should recreate the cinema experience as closely as possible.

PANAMORPH ELIMINATES THE BARS

Most commercial cinemas preserve the original 2.40:1 aspect ratio by projecting widescreen films onto the screen through an anamorphic lens, which is why those black letterbox bars don't exist at the theater. Panamorph's FVX200 anamorphic lens system, along with a 16:9 projector and a 2.40:1 screen, eliminates the bars from the home theater experience. You see the full visual impact of what the film director intended - a truly cinematic experience instead of just a big TV hanging on your wall.



Retractable and ambient light rejecting screen technologies allow projection systems to come out of the dark and into the light of your living room.
(available separately from leading screen manufacturers)

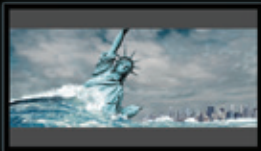
THE TRUTH ABOUT 16:9

Aspect ratio refers to the ratio of width to height. In other words, a screen that has a 2.40:1 aspect ratio is 2.4 times wider than it is tall. A 16:9 aspect ratio has a screen 1.78 times its height. Now add to the equation that over 70% of all major motion pictures are filmed in this wider aspect ratio of around 2.40:1. The end result is that these films must be compressed to fit within the smaller 16:9 screens, stuck between two black bars.

The Panamorph lens system takes every single special effect right to the edge of the screen, restoring every last pixel for action and adventure - exactly the way the movie was meant to be experienced.

Those black "letterbox" bars represent a surprising 25% waste of the display's claimed "1080p" resolution. Rather than taking advantage of the full 1920 x 1080 resolution of your flat panel or 16:9 projector, letterboxed movies are generally encoded at a mere 1920 x 810. What happened to the other 270 vertical rows of pixels? Over half a million pixels are lost to create those two obtrusive black letterbox bars.

16:9 Format



Over half a million pixels make up the black letterbox bars around 2.40:1 films, sabotaging the ultimate performance of your projector and greatly diminishing the film's original immersive and dramatic effects.



HDTV and smaller format movies are perfectly suited for the full performance capabilities of a 16:9 projector.

Panamorph FVX200 Enhanced 2.40:1



Panamorph's FVX200 anamorphic lens paired with a 2.40:1 screen delivers 80% more image area than widescreen movies shown on a conventional 16:9 screen of the same height. That's 80% more punch, drama, and action.



HDTV and smaller format movies still display properly on your 2.40:1 screen.

BASIC SETUP

THROW DISTANCE

Projector lens to screen should be between 12 to 28 feet.

THROW RATIO

Minimum throw at least 1.7X the native 16:9 image width of the projector, or 4.3X the 2.35:1 / 2.40:1 screen height.

WHAT YOU'LL NEED

A PANAMORPH LENS SYSTEM

The Panamorph FVX200 and the appropriate projector mount.

A WIDE FORMAT SCREEN

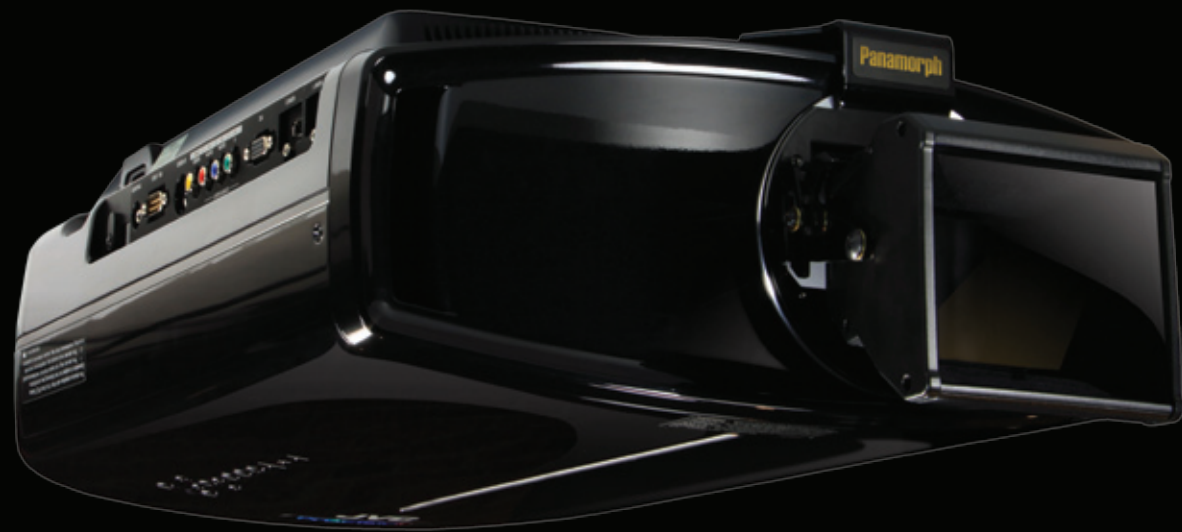
We recommend an optimum screen aspect ratio of 2.40:1 to accommodate the ratios of most major motion pictures.

16:9 HIGH DEFINITION PROJECTOR WITH PANAMORPH MODE I AND MODE II SCALING

Panamorph lens systems work with the majority of current HD projectors. Scaling modes are common in projectors manufactured after 2008.

Ask your sales representative for more information on the necessary scaling modes, or visit Panamorph at www.Panamorph.com.

Shown with JVC projector.
Projector and Panamorph Lens System sold separately.



PANAMORPH FVX200

ANAMORPHIC VERTICAL COMPRESSION LENS

The FVX200 is quite simply the highest performing anamorphic lens in its price range. In fact, the FVX200 produces the brightest, sharpest, highest contrast image of any anamorphic lens you can buy at any price. It clearly sets the industry standard by incorporating a patented hybrid cylindrical/prism design that easily installs in front of digital projectors, converting them from a standard 16:9 format to the true widescreen cinematic 2.40:1 screen aspect ratio.

- Includes a custom projector adapter for a simple, clean look and installation
- Precision ground, polished and coated glass elements
- Produces exceptional image quality up to and beyond 1080 resolution at throw ratios down to 1.7 (image distance divided by image width)
- Utilizes the same anamorphic enhancement process found in most motion picture theaters
- Produces the highest image clarity of any anamorphic lens available via the FVX200's integrated astigmatism correction
- Minimizes residual chromatic aberration (it's virtually invisible when watching movies at any resolution) through an optimized arrangement of low dispersion glass
- Compatible with all 3D projection technology
- Visit www.Panamorph.com for more information

Panamorph™

1755 Telstar Drive, Suite 103
Colorado Springs, CO 80920
719-266-2680
Sales@Panamorph.com
www.Panamorph.com